



RT 45

45t capacity class
Rough Terrain Crane
Datasheet
metric



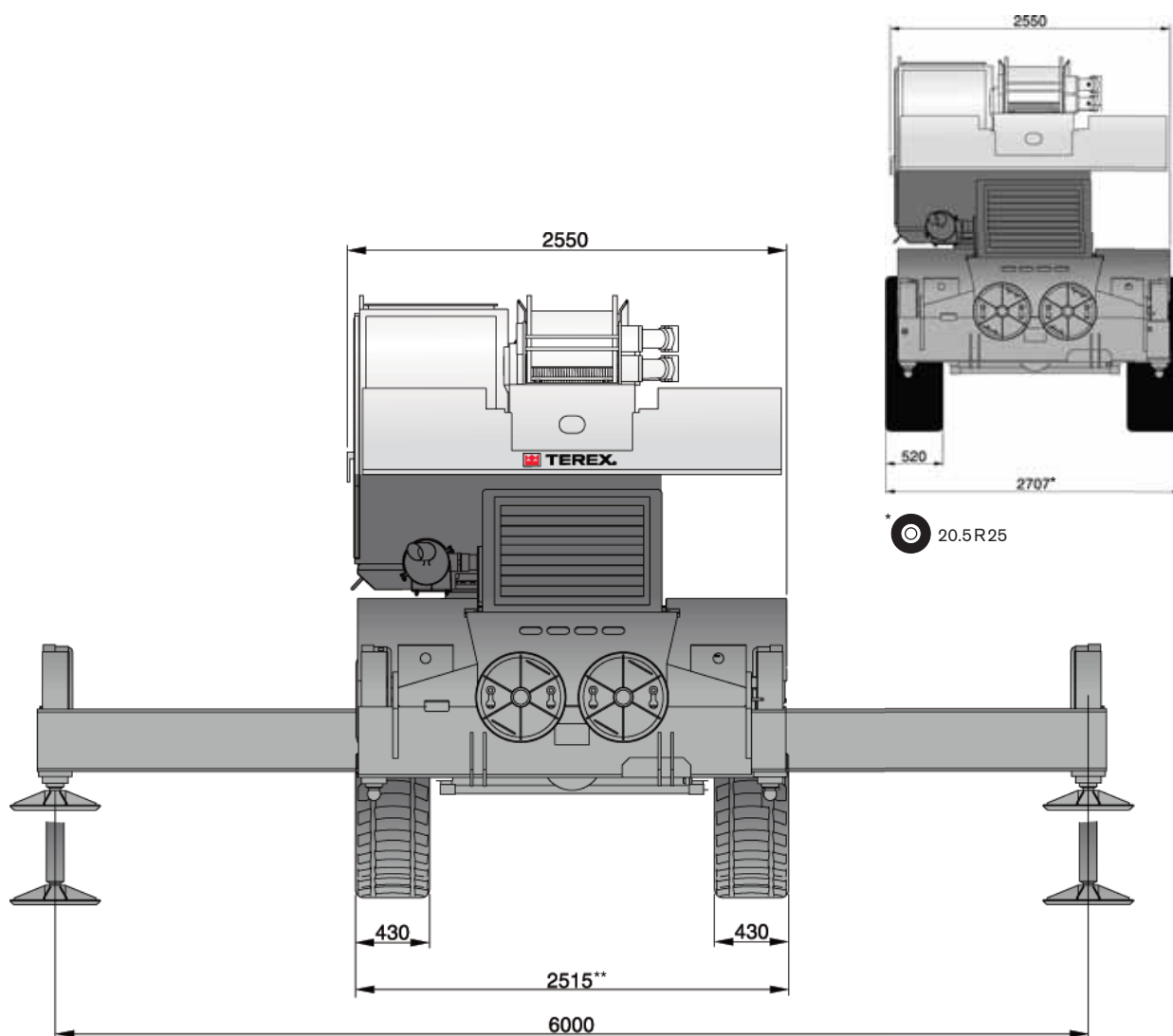
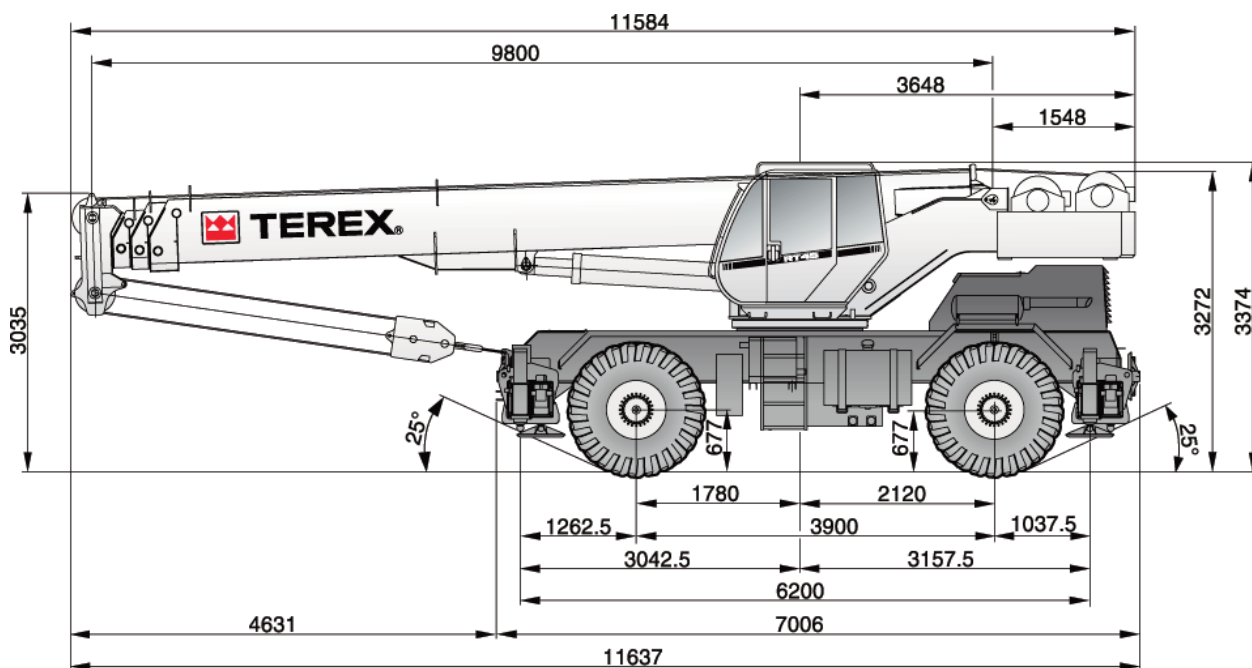
RT 45

WORKS FOR YOU.™

DIMENSIONS

RT 45

DIMENSIONS · ABMESSUNGEN · DIMENSIONI · DIMENSIONES ·
DIMENSÕES · PAZMERЫ






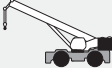








* 20.5R25

** 16.00R25

WEIGHTS

RT 45

POIDS · GEWICHTE · PESI · PESOS · PESOS · BEC

				
 without hook block · sans crochet moufle · ohne Unterflasche · senza bozzello · sin gancho · sem moitão · п/ Крюкблок		28 000 kg	13 440 kg	14 560 kg
Add / Subtract for main optional equipment · Supplément / retrait de poids pour équipement optionnel · Für optionale Ausstattung hinzufügen / abziehen · Da sommare a seconda dell'allestimento opzionale · Sumar / restar para equipamiento opcional principal · Acrescentar / subtrair para principais equipamentos opcionais · Добавить/вычесть для дополнительного оборудования				
 8 m boxed stowed aside the boom · 8 m caissonnée, escamotable sur le côté de la flèche · 8 m Kastenprofil, seitlich am Ausleger verstaut · scatola 8 m staffata a lato braccio · 8 m tipo cajón almacenado lateralmente a la pluma · 8 m tipo caixa guardada na lateral da lança · 8 m коробчатая, укладываемая сбоку на основной стреле		+ 730 kg		
15 m boxed stowed aside the boom · 15 m caissonnée, escamotable sur le côté de la flèche · 15 m Kastenprofil, seitlich am Ausleger verstaut · scatola 15 m staffata a lato braccio · 15 m tipo cajón almacenado lateralmente a la pluma · 15 m tipo caixa guardada na lateral da lança · 15 m коробчатая, укладываемая сбоку на основной стреле		+ 1 010 kg		
8 m lattice stowed aside the boom · 8 m en treillis escamotable sur le côté de la flèche · 8 m Gittermast, seitlich am Ausleger verstaut · tralicciata 8 m staffata a lato braccio · 8 m tipo celosia almacenado lateralmente a la pluma · 8 m treliçada guardada na lateral da lança · 8 m решетчатая, укладываемая сбоку на основной стреле		+ 840 kg		
 2 **		+ 600 kg	- 70 kg	+ 670 kg
 45 t*		+ 400 kg	+ 630 kg	- 230 kg
 35 t*		+ 280 kg	+ 440 kg	- 160 kg
 25 t*		+ 260 kg	+ 410 kg	- 150 kg
 15 t*		+ 194 kg	+ 305 kg	- 110 kg
 10 t*		+ 170 kg	+ 270 kg	- 100 kg
 5 t*		+ 50 kg	+ 80 kg	- 30 kg

NOTE: Values are subject to 2% variation · REMARQUE : Les valeurs sont sujettes à une variation de 2% · HINWEIS: Werte können bis zu 2% abweichen ·
NOTA: I valori possono variare fino al 2% · NOTA: Valores sujetos a una variación del 2% · OBSERVAÇÃO: Valores sujeitos a 2% de variação ·
ПРИМЕЧАНИЕ. Значения даны с допуском +/- 2%

* Weight distribution calculated considering the hook block linked to the front shield of the machine · Répartition du poids calculée en considérant le crochet moufle
connecté au panneau frontal de la machine · Berechnung der Gewichtsverteilung mit Hakenflasche am vorderen Rammschutz des Krans gesichert · Le distribuzioni
dei pesi sono calcolate considerando il bozzello legato davanti al carro · Distribución de pesos calculada considerando el gancho asegurado al protector frontal ·
Distribuição de pesos calculada considerando o moitão ligado à proteção dianteira da máquina · Распределение нагрузки рассчитано для крана с крюкблком, за-
крепленном на переднем щите машины

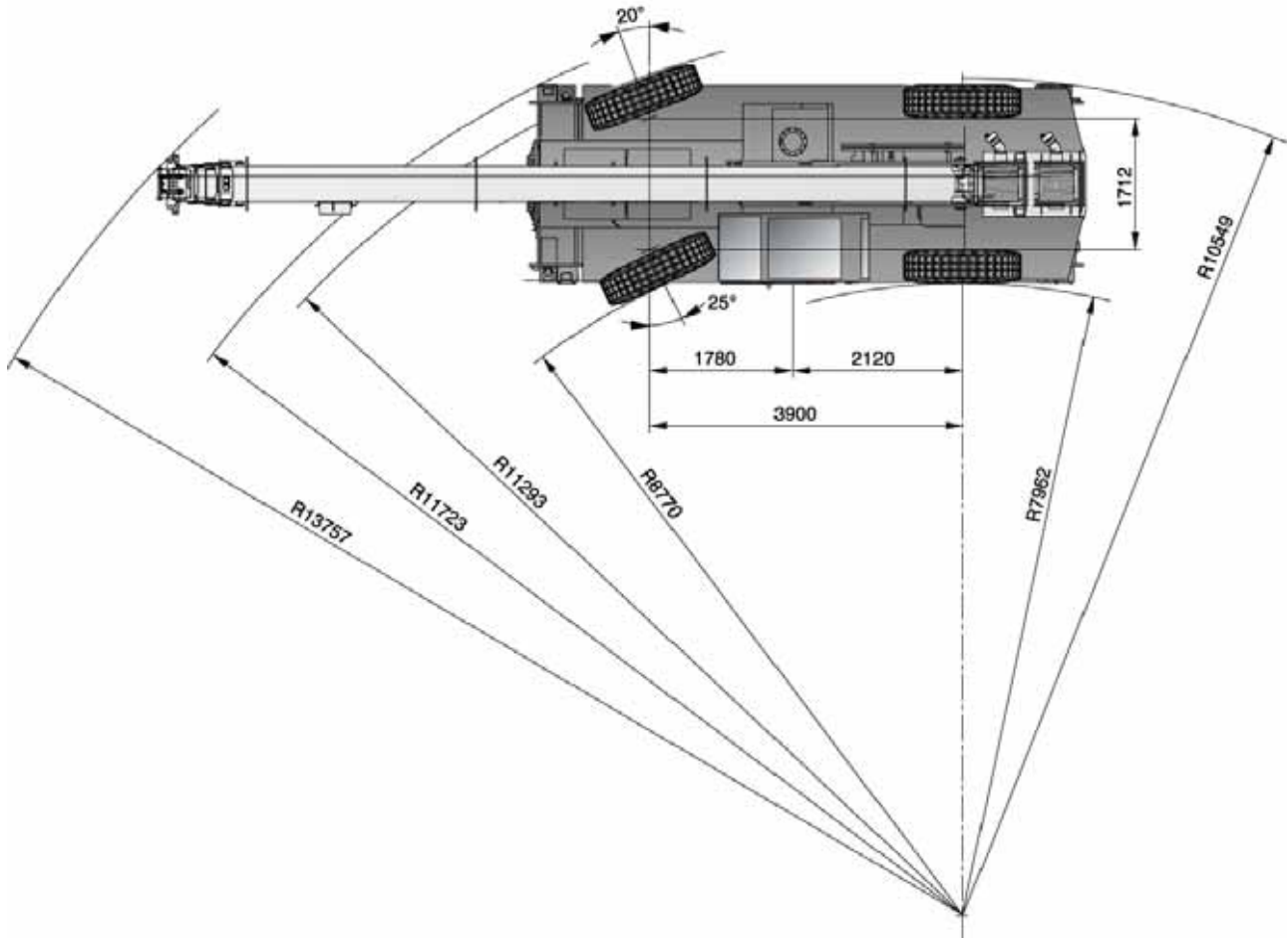
** Weight includes rope · Le poids comprend le câble · Gewicht einschließlich Seile · I pesi includono la fune · El peso incluye soporte cabrestante · Peso inclui cabo ·
Вес включает вес троса

STEERING RADII

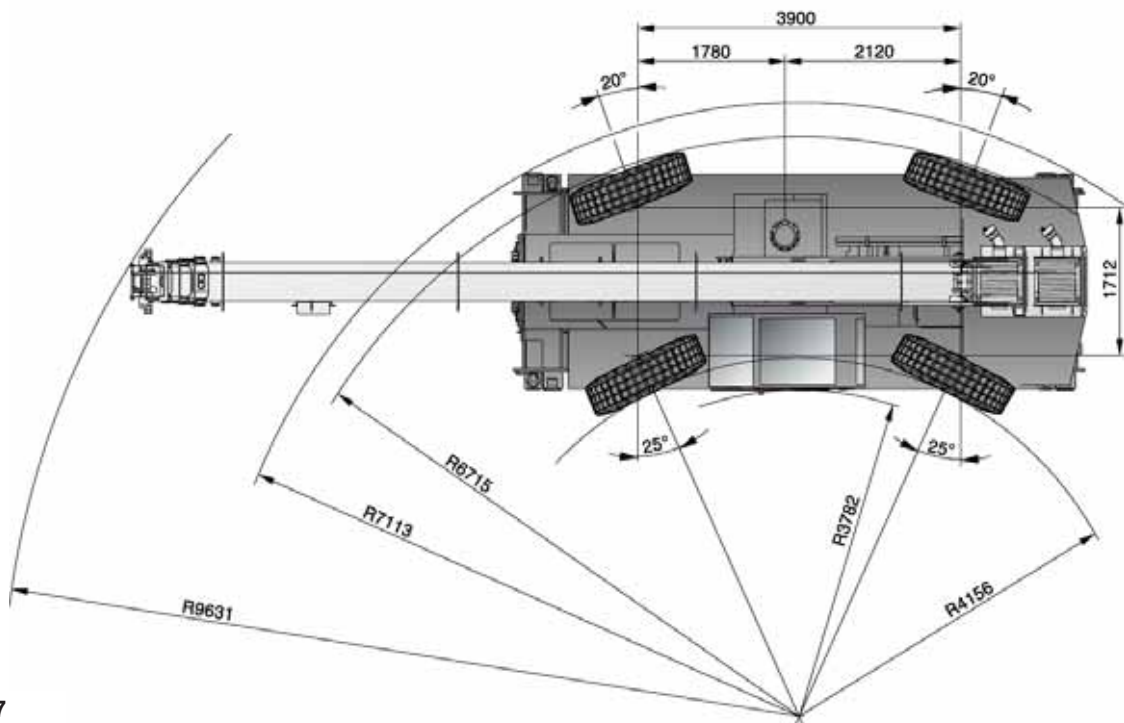
RT 45

RAYON DE BRAQUAGE · LENKRADIEN · RAGGI DI STERZATA ·
RADIOS DE DIRECCIÓN · RAIOS DE GIRO · РАДИУСЫ ПОВОРОТОВ

**Two wheel steer · Deux roues directrices · Zweiradlenkung · Sterzata a due ruote ·
Dirección en dos ruedas · Direção em duas rodas · Поворот на двух колесах**



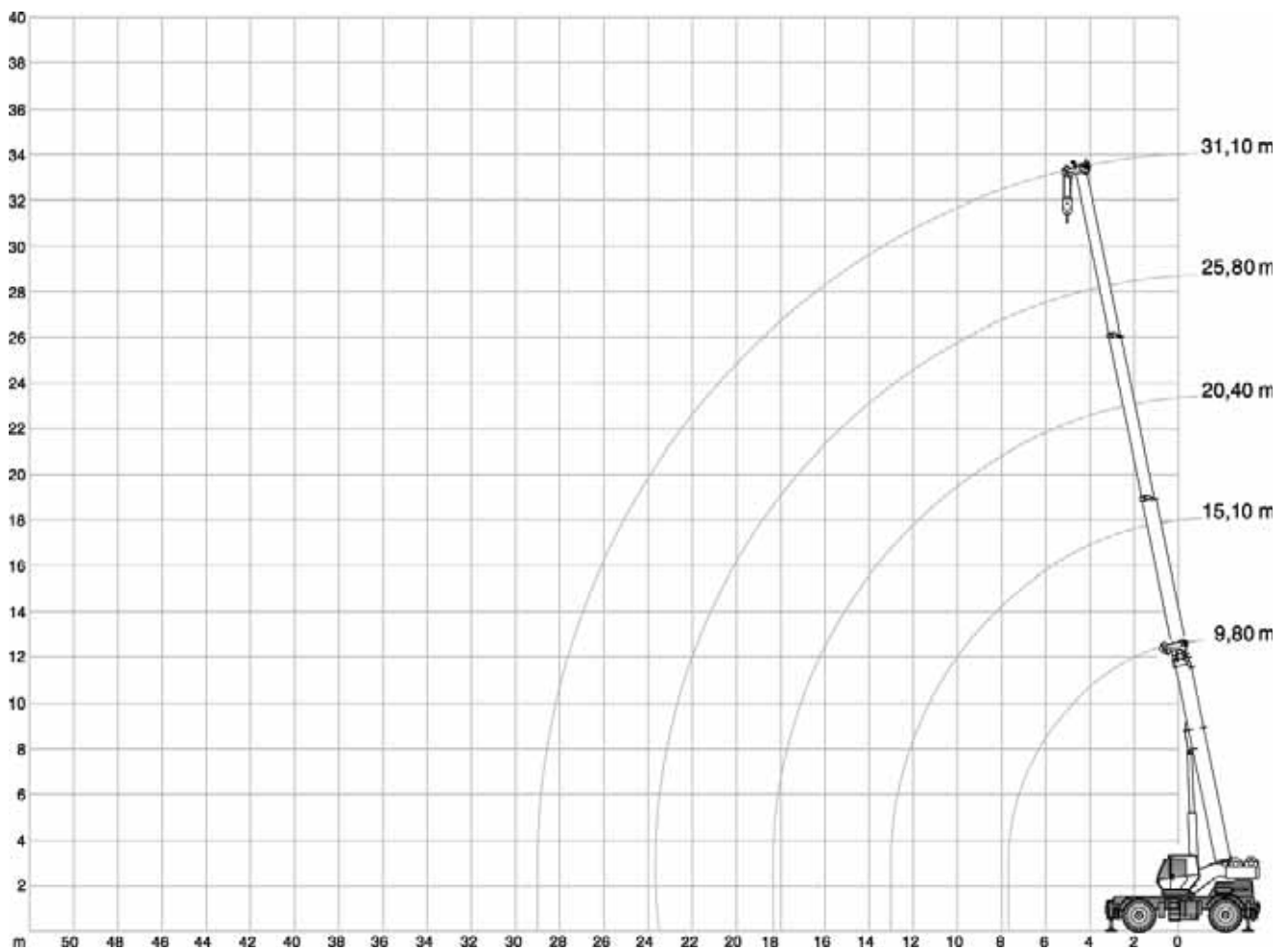
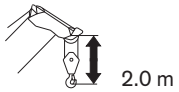
**Four wheel steer · Quatre roues directrices · Allradlenkung · Sterzata a quattro ruote ·
Dirección en cuatro ruedas · Direção em quatro rodas · Поворот на четырех колесах**



RANGE GRAPH

RT 45

DIAGRAMME DE CHARGE · ARBEITSBEREICH · CAMPO DI PORTATA ·
DIAGRAMA DE CARGA · GRÁFICO DE ALCANCE ·
ДИАГРАММА РАБОЧЕЙ ЗОНЫ



LOAD CHART

RT 45

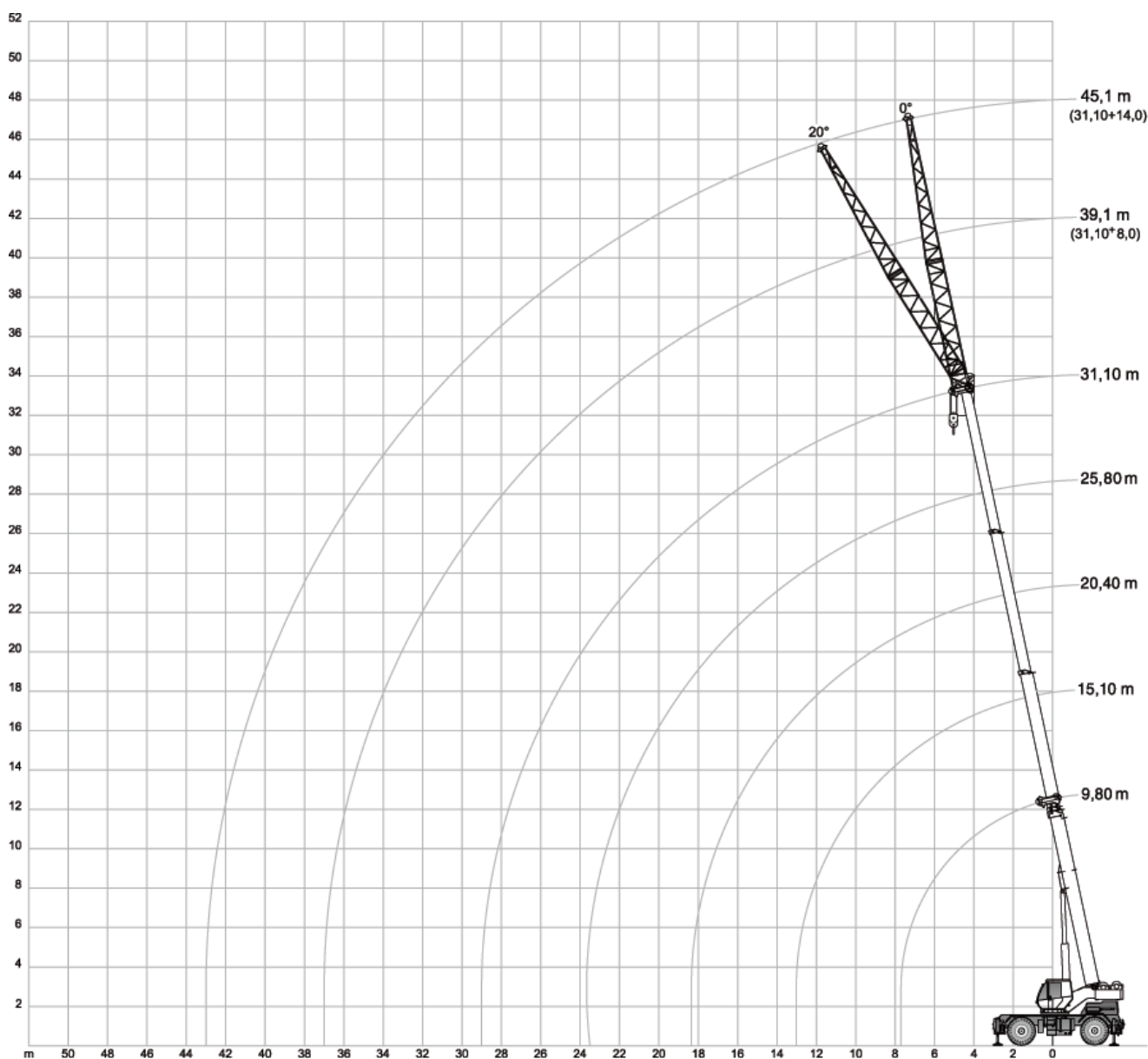
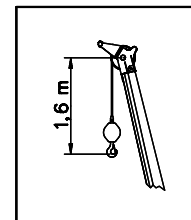
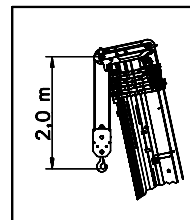
GRAPHIQUE DE CHARGE · TRAGLASTTABELLE · DIAGRAMMA DI CARICO ·
TABLA DE CARGA · TABELA DE CARGA · ТАБЛИЦА НАГРУЗОК

  5.5 t  6.00 m x 6.20 m  360° EUROPEAN STANDARD EN 13000								
			9.80 m	15.10 m	20.40 m	25.80 m	31.10 m	
m			t	t	t	t	t	m
3,0			45,00	25,00	17,00	-	-	3,0
3,5			34,10	25,00	17,10	-	-	3,5
4,0			28,60	25,00	17,40	10,00	-	4,0
4,5			25,20	25,00	17,80	10,10	-	4,5
5,0			22,20	24,30	16,10	12,10	-	5,0
6,0			18,30	19,80	14,50	12,00	6,80	6,0
7,0			15,50	16,20	13,10	10,80	7,40	7,0
8,0			-	12,80	12,00	9,90	8,50	8,0
9,0			-	10,30	10,10	9,00	7,40	9,0
10,0			-	8,50	8,70	8,30	8,00	10,0
11,0			-	7,20	7,30	7,10	6,50	11,0
12,0			-	6,10	6,20	6,30	6,00	12,0
13,0			-	5,20	5,40	5,40	5,50	13,0
14,0			-	-	4,70	4,70	4,70	14,0
15,0			-	-	4,00	4,10	4,00	15,0
16,0			-	-	3,50	3,60	3,60	16,0
17,0			-	-	3,10	3,20	3,20	17,0
18,0			-	-	2,70	2,80	2,90	18,0
19,0			-	-	-	2,50	2,50	19,0
20,0			-	-	-	2,20	2,30	20,0
21,0			-	-	-	2,00	2,00	21,0
22,0			-	-	-	1,70	1,80	22,0
23,0			-	-	-	1,50	1,60	23,0
24,0			-	-	-	-	1,40	24,0
25,0			-	-	-	-	1,20	25,0
26,0			-	-	-	-	1,10	26,0
27,0			-	-	-	-	0,90	27,0
28,0			-	-	-	-	0,80	28,0
29,0			-	-	-	-	0,70	29,0

RANGE GRAPH

RT 45










DIAGRAMME DE CHARGE · ARBEITSBEREICH · CAMPO DI PORTATA ·
 DIAGRAMA DE CARGA · GRÁFICO DE ALCANCE ·
 ДИАГРАММА РАБОЧЕЙ ЗОНЫ



LOAD CHART

RT 45

GRAPHIQUE DE CHARGE · TRAGLASTTABELLE · DIAGRAMMA DI CARICO ·
TABLA DE CARGA · TABELA DE CARGA · ТАБЛИЦА НАГРУЗОК

  5.5 t  6.00 m x 6.20 m  360° EUROPEAN STANDARD EN 13000						
 31.1 m						
 m	 8 m		 14 m		 m	
	0°	20°	0°	20°		
t	t	t	t	t	t	
7,0	5,20	-	-	-	7,0	
8,0	5,30	-	3,20	-	8,0	
9,0	5,30	3,20	3,20	-	9,0	
10,0	5,20	3,10	3,15	-	10,0	
11,0	4,80	3,00	3,05	-	11,0	
12,0	4,50	2,95	2,90	1,65	12,0	
13,0	4,20	2,90	2,80	1,60	13,0	
14,0	3,90	2,85	2,70	1,60	14,0	
15,0	3,60	2,80	2,60	1,55	15,0	
16,0	3,40	2,75	2,50	1,50	16,0	
17,0	3,20	2,70	2,40	1,50	17,0	
18,0	3,00	2,65	2,30	1,45	18,0	
19,0	2,60	2,60	2,20	1,45	19,0	
20,0	2,40	2,45	2,10	1,40	20,0	
21,0	2,15	2,30	2,00	1,40	21,0	
22,0	1,90	2,15	1,90	1,35	22,0	
23,0	1,70	1,90	1,80	1,30	23,0	
24,0	1,55	1,65	1,60	1,30	24,0	
25,0	1,35	1,60	1,50	1,25	25,0	
26,0	1,20	1,30	1,35	1,25	26,0	
27,0	1,05	1,20	1,20	1,15	27,0	
28,0	0,95	1,05	1,05	1,10	28,0	
29,0	0,80	0,90	0,95	1,05	29,0	
30,0	0,70	0,85	0,80	0,95	30,0	
31,0	0,60	0,70	0,70	0,90	31,0	
32,0	0,50	0,60	0,60	0,75	32,0	
33,0	0,40	0,50	0,55	0,70	33,0	
34,0	0,35	0,40	0,45	0,60	34,0	
35,0	0,25	0,30	0,35	0,50	35,0	
36,0	0,20	0,20	0,30	0,40	36,0	
37,0	-	-	0,20	0,35	37,0	
38,0	-	-	0,15	0,25	38,0	
39,0	-	-	-	0,15	39,0	
40,0	-	-	-	0,10	40,0	
41,0	-	-	-	-	41,0	